


Konica Minolta Business Solutions Asia Pte Ltd  
30 Pasir Panjang Road #06-32  
Mapletree Business City  
Singapore 117440

The following samples were submitted and identified by the client as:

Sample Description : TN-623 K Toner  
Sample Receiving Date : 16-May-2019  
Test Performing Period : 23-May-2019 to 30-May-2019  
Test Performed : As specified by client, with reference to  
EN 71-3 – Migration of certain elements  
(details please refer to result page(s)).

Signed for and on behalf of  
SGS Testing & Control Services Singapore Pte Ltd



Y C Tham (Ms)  
Laboratory Manager

This document is issued by the Company subject to its General Conditions of Service accessible at [www.sgs.com/terms\\_and\\_conditions.htm](http://www.sgs.com/terms_and_conditions.htm) and, for electronic format documents, subject to Terms and Conditions for Electronic Documents at [www.sgs.com/terms\\_e-document.htm](http://www.sgs.com/terms_e-document.htm). Attention is drawn to the limitation of liability, indemnification and jurisdiction issues defined therein. Any holder of this document is advised that information contained here on reflects the Company's findings at the time of its intervention only and within the limits of Client's instructions, if any. The Company's sole responsibility is to its Client and this document does not exonerate parties to a transaction from exercising all their rights and obligations under the transaction documents. This document cannot be reproduced except in full, without prior written approval of the Company. Any unauthorized alteration, forgery or falsification of the content or appearance of this document is unlawful and offenders may be prosecuted to the fullest extent of the law.  
Unless otherwise stated the results shown in this test report refer only to the sample(s) tested and such sample(s) are retained for 30 days only.

Sample Description

(1) Black powder

**Test Results:**
**Directive 2009/48/EC and its Amendment Council Directive (EU) 2017/738 – EN71-3:2013 + A3: 2018 – Migration of certain elements**
**Category I : Dry, brittle, powder-like or pliable toy material**

CATEGORY I				PASS
*Test Item	Method	MDL (mg/kg)	Result (mg/kg)	Limit (mg/kg)
			(1)	
Soluble Aluminium (Al)	With reference to EN71 Part 3:2013 +A1:2014 +A2:2017.. Analysis was performed by ICP-AES	50	n.d.	5625
Soluble Antimony (Sb)		1	n.d.	45
Soluble Arsenic (As)		0.5	n.d.	3.8
Soluble Barium (Ba)		50	n.d.	1500
Soluble Boron (B)		50	n.d.	1200
Soluble Cadmium (Cd)		0.1	n.d.	1.3
Soluble Cobalt (Co)		0.5	n.d.	10.5
Soluble Copper (Cu)		50	n.d.	622.5
Soluble Lead (Pb)		0.5	n.d.	2
Soluble Manganese (Mn)		50	n.d.	1200
Soluble Mercury (Hg)		0.5	n.d.	7.5
Soluble Nickel (Ni)		10	n.d.	75
Soluble Selenium (Se)		5	n.d.	37.5
Soluble Strontium (Sr)		50	66.6	4500
Soluble Tin (Sn)		4.9	n.d.	15 000
Soluble Zinc (Zn)		50	n.d.	3750
Soluble Chromium (Cr)	5	n.d.	-	
Soluble Chromium (III) Cr(III)	With reference to EN71 Part 3:2013 +A1:2014 + A2:2017. Analysis was performed by LC-ICP-MS	5	n.d.	37.5
Soluble Chromium (VI) Cr(VI)		0.018	n.d.	0.02

This document is issued by the Company subject to its General Conditions of Service accessible at [www.sgs.com/terms\\_and\\_conditions.htm](http://www.sgs.com/terms_and_conditions.htm) and, for electronic format documents, subject to Terms and Conditions for Electronic Documents at [www.sgs.com/terms\\_e-document.htm](http://www.sgs.com/terms_e-document.htm). Attention is drawn to the limitation of liability, indemnification and jurisdiction issues defined therein. Any holder of this document is advised that information contained here on reflects the Company's findings at the time of its intervention only and within the limits of Client's instructions, if any. The Company's sole responsibility is to its Client and this document does not exonerate parties to a transaction from exercising all their rights and obligations under the transaction documents. This document cannot be reproduced except in full, without prior written approval of the Company. Any unauthorized alteration, forgery or falsification of the content or appearance of this document is unlawful and offenders may be prosecuted to the fullest extent of the law.

Unless otherwise stated the results shown in this test report refer only to the sample(s) tested and such sample(s) are retained for 30 days only.

CATEGORY I				PASS
*Test Item	Method	MDL (mg/kg)	Result (mg/kg)	Limit (mg/kg)
			(1)	
Methyl tin (MeT)	With reference to EN71 Part 3:2013 +A1:2014. Analysis was performed by GC/MS	0.14	n.d.	-
Di-n-propyl tin (DProT)		0.14	n.d.	-
Butyl tin (BuT)		0.14	n.d.	-
Dibutyl Tin (DBT)		0.14	n.d.	-
Tributyl Tin (TBT)		0.14	n.d.	-
n-octyl tin (MOT)		0.14	n.d.	-
Tetrabutyltin (TeBT)		0.14	n.d.	-
Diphenyltin (DphT)		0.14	n.d.	-
Di-n-octyl tin (DOT)		0.14	n.d.	-
Triphenyl Tin (TphT)		0.14	n.d.	-
<b>Soluble Organic Tin</b>		-	n.d.	0.9

- Note:
- (1) mg/kg = ppm ; 0.1wt% = 1000ppm
  - (2) n.d.= Not Detected
  - (3) MDL = Method Detection Limit
  - (4) “-“ = Not Regulated

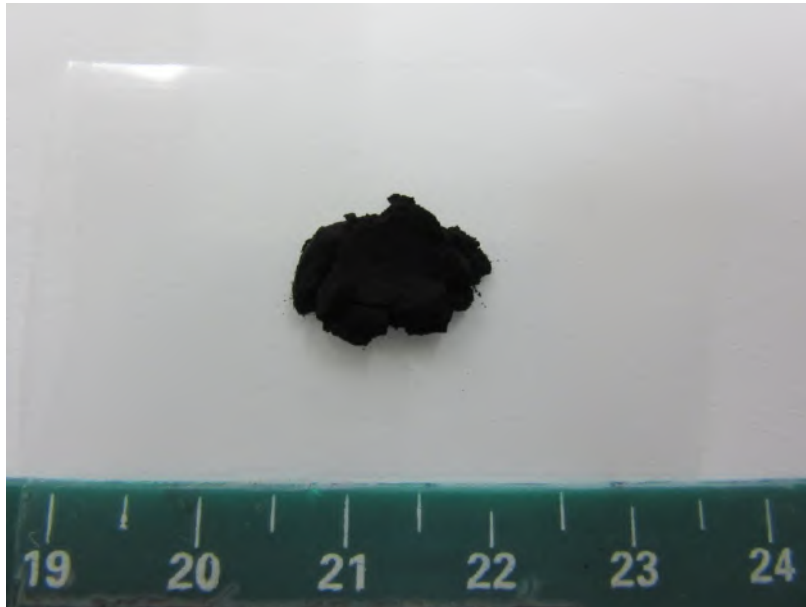
\* Tested by SGS Lab (Ref: HY/2019/50224)

This document is issued by the Company subject to its General Conditions of Service accessible at [www.sgs.com/terms\\_and\\_conditions.htm](http://www.sgs.com/terms_and_conditions.htm) and, for electronic format documents, subject to Terms and Conditions for Electronic Documents at [www.sgs.com/terms\\_e-document.htm](http://www.sgs.com/terms_e-document.htm). Attention is drawn to the limitation of liability, indemnification and jurisdiction issues defined therein. Any holder of this document is advised that information contained here on reflects the Company's findings at the time of its intervention only and within the limits of Client's instructions, if any. The Company's sole responsibility is to its Client and this document does not exonerate parties to a transaction from exercising all their rights and obligations under the transaction documents. This document cannot be reproduced except in full, without prior written approval of the Company. Any unauthorized alteration, forgery or falsification of the content or appearance of this document is unlawful and offenders may be prosecuted to the fullest extent of the law.

Unless otherwise stated the results shown in this test report refer only to the sample(s) tested and such sample(s) are retained for 30 days only.

**Sample photo:**

SGS authenticate the photo on original report only



\*\*\*End of Report\*\*\*

This document is issued by the Company subject to its General Conditions of Service accessible at [www.sgs.com/terms\\_and\\_conditions.htm](http://www.sgs.com/terms_and_conditions.htm) and, for electronic format documents, subject to Terms and Conditions for Electronic Documents at [www.sgs.com/terms\\_e-document.htm](http://www.sgs.com/terms_e-document.htm). Attention is drawn to the limitation of liability, indemnification and jurisdiction issues defined therein. Any holder of this document is advised that information contained here on reflects the Company's findings at the time of its intervention only and within the limits of Client's instructions, if any. The Company's sole responsibility is to its Client and this document does not exonerate parties to a transaction from exercising all their rights and obligations under the transaction documents. This document cannot be reproduced except in full, without prior written approval of the Company. Any unauthorized alteration, forgery or falsification of the content or appearance of this document is unlawful and offenders may be prosecuted to the fullest extent of the law.  
Unless otherwise stated the results shown in this test report refer only to the sample(s) tested *and such sample(s) are retained for 30 days only.*